

Braccia Model

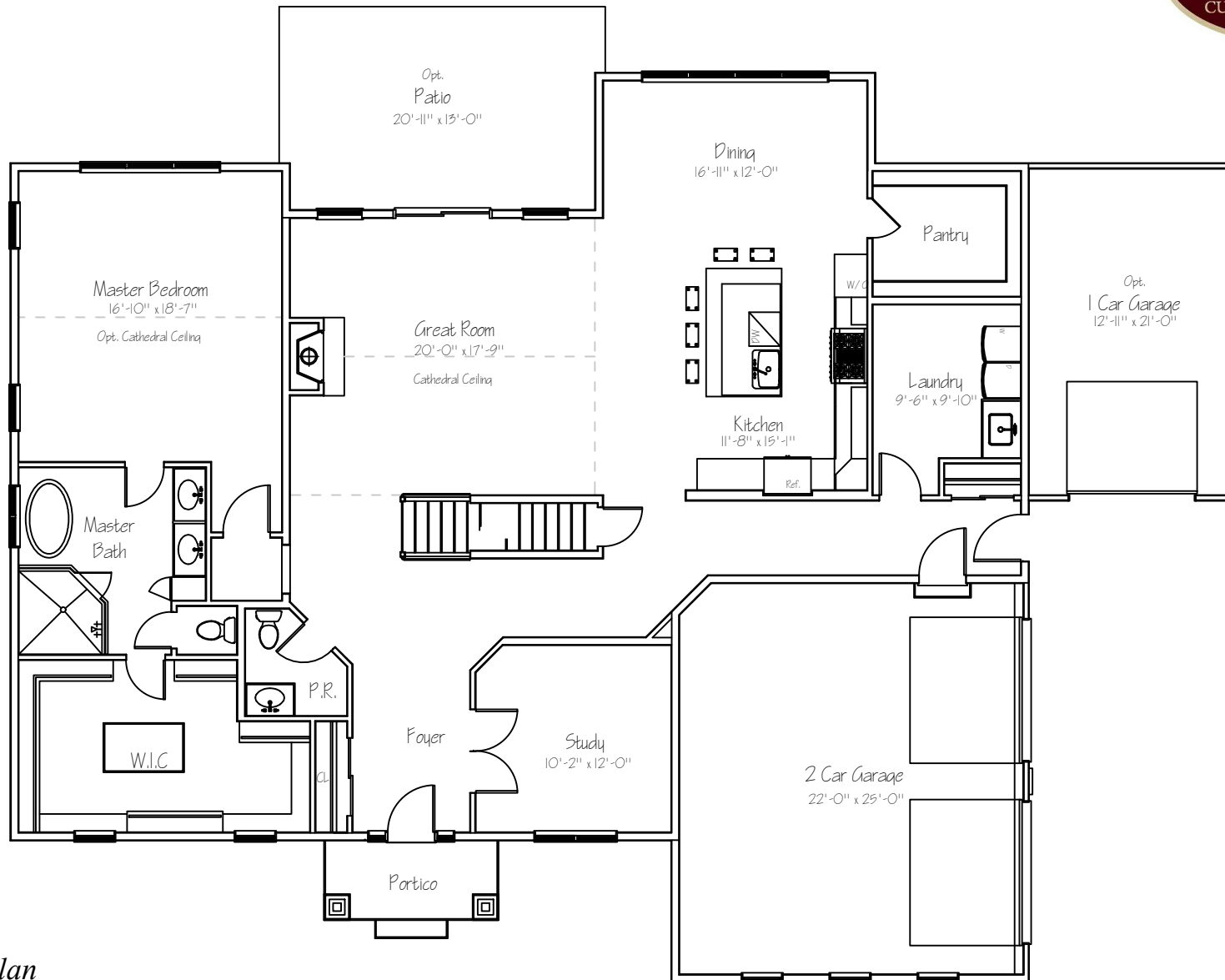


47 Upper Creek Road, Stockton NJ 08559 (Delaware Township)

Shown with optional landscape package, facade, front porch, roof dormers, 3rd car garage, and stone work.

The Braccia Model

Marketed By:



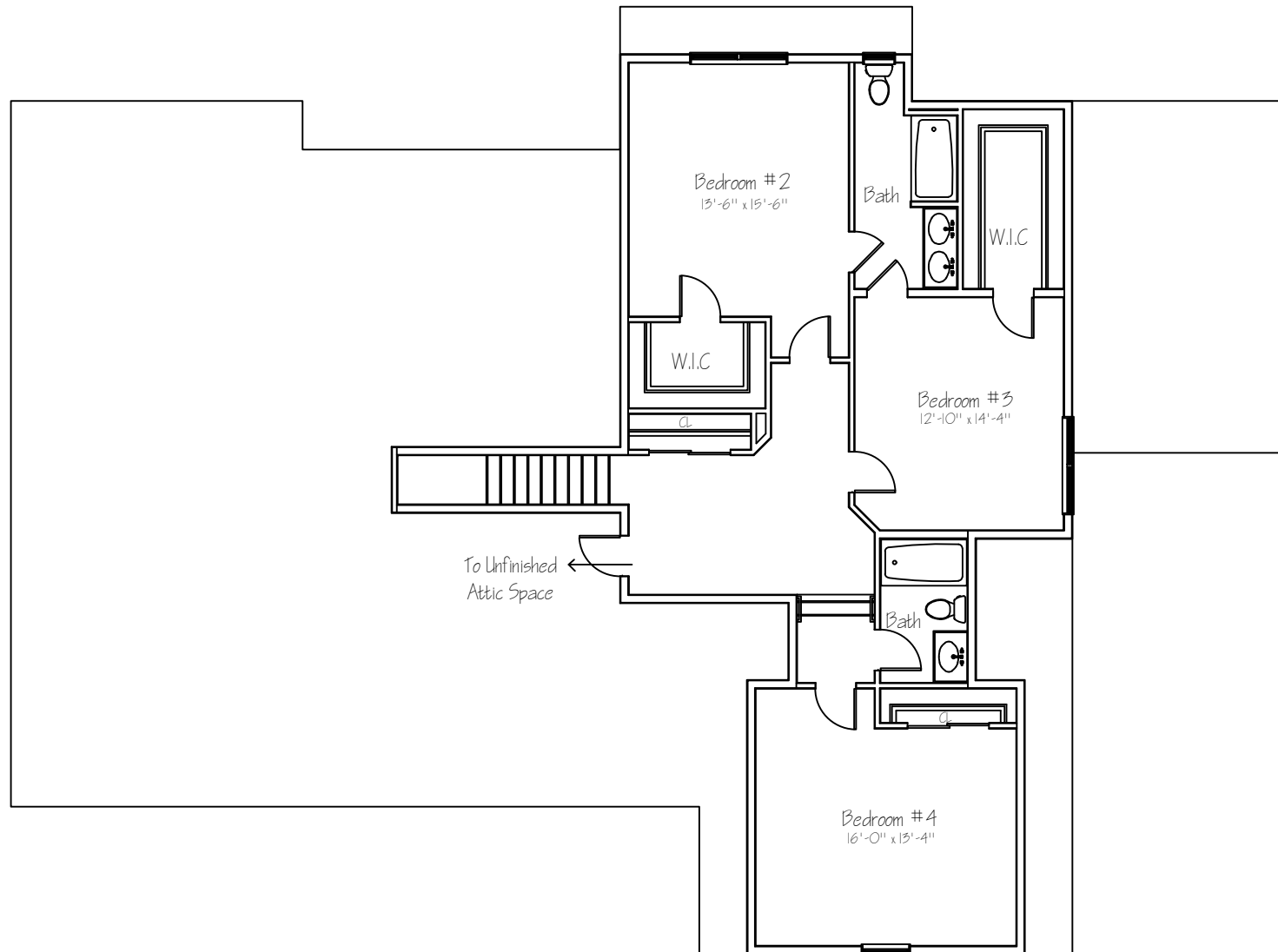
first floor plan
Sq. Ft.: 2507
Total Sq. Ft.: 3738

Illustrations and floor plans are artist's conceptual renderings. Details, colors and dimensions are subject to change and field verification. Window and front door locations and room dimensions may vary according to elevation. Mature landscaping not typical. Light fixture locations and window boxes not included.

4/18/24

The Braccia Model

Marketed By:



Second floor plan

Sq. Ft.: 1231

Total Sq. Ft.: 3738

Illustrations and floor plans are artist's conceptual renderings. Details, colors and dimensions are subject to change and field verification. Window and front door locations and room dimensions may vary according to elevation. Mature landscaping not typical. Light fixture locations and window boxes not included.

4/18/24

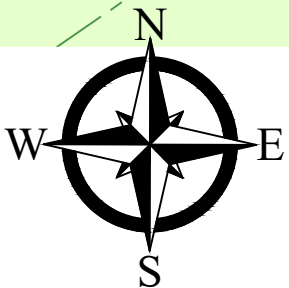
47 Upper Creek Rd, Stockton, NJ 08559

Marketed By:



47 Upper Creek Rd
12.83 acres

Upper Creek Road



George K.

350 S. Main Street, Suite 307
Doylestown, PA 18901

George@primecustombuilders.com



(215) 343-3300



George K.
350 S. Main Street, Suite 307
Doylestown, PA 18901
(215) 343 - 3300
George@primecustombuilders.com

47 Upper Creek Rd, Stockton NJ 08559 (Delaware Twp)

STANDARD LUXURY FEATURES

Community Benefits and Features

- Hunterdon Central Regional School District
- Delaware Township
- Private Water
- Private Sewer
- 12.83 Acre Home Site

Spectacular Interiors

- Nine foot ceilings on first floor
- Luxurious master bedroom suite, including spacious walk in closet and lavish bath
- Warm and spacious family room with gas fireplace
- Elegant trim package, 2 panel doors throughout, crown molding & chair rail in dining room
- Dramatic cathedral ceilings in the family room
- Classic staircase with stained oak main stairs with stained railing and painted balusters
- Finely crafted oak hardwood flooring in first floor
- Wall to wall carpeting in an array of colors
- 1st floor laundry room

Gourmet Kitchens

- Adjoining dining area overlooking rear yard
- Sprawling kitchen displaying fine attention to detail in every aspect
- Granite counter tops
- Oversized pantry
- Gourmet GE appliances including energy saver dishwasher, self-cleaning built-in wall oven, built-in microwave, cooktop
- Your choice of beautifully crafted raised-panel, maple cabinetry topped with crown molding
- Trash can / recycling drawer
- Stainless steel sink

Lavish Bathrooms

- Exquisitely detailed master bath with double vanity, soaking tub & separate stall shower
- Hall bath to have ceramic tile floor
- Pedestal sink in powder room

Superior Construction & Energy Efficiency

- Poured concrete foundation walls
- Insulated exterior doors with weather stripping and adjustable thresholds
- Full insulation with R-20 walls & R-49 ceilings
- Additional "Green" building features available

Exteriors Features

- Your choice of a wide variety of maintenance free vinyl siding & shutters
- Seamless aluminum gutters and downspouts
- Aluminum wrapped soffits and fascia
- Fiberglass architectural style roof shingles with 30 year warranty
- 2-3 car garage
- High efficiency windows with grilles & screens

Utilities and Conveniences

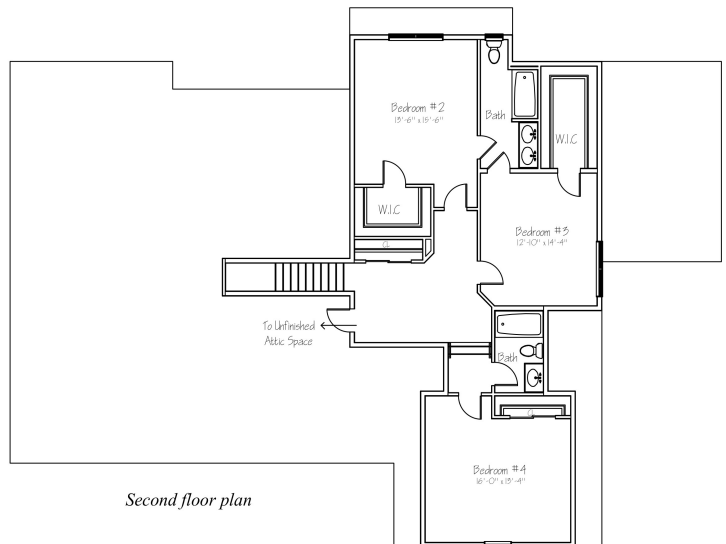
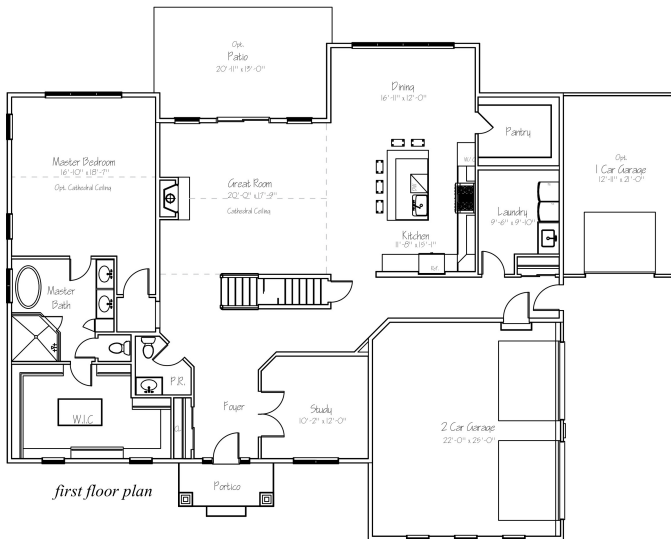
- High efficiency air conditioning for maximum comfort and efficiency
- High efficiency gas heater
- 50 gallon quick recovery water heater
- Laundry room with washer & dryer hook ups and dryer vent
- Utility sink in laundry room
- Pex plumbing water lines

Jersey Building Group

Braccia Model



- ◆ 4 bedroom
- ◆ 3.5 Bathrooms
- ◆ 3,858 Sq Ft
- ◆ 2-3 Car Garage
- ◆ Impressive 1st Floor Owner Suite
- ◆ Hunterdon Central Reg. School District
- ◆ 12.83 acre homesite
- ◆ Turn this home into your dream home!



47 Upper Creek Rd, Stockton, NJ 08559 (Delaware Twp)

Proudly Offered at \$1,495,000



George K.

215-343-3300

George@primecustombuilders.com

Marketed By:

