

Jamison Modern Farmhouse



Shown with optional Modern Farmhouse Facade, transom above front door, metal roofs and landscaping package
Shown with upgraded: black windows



STOCKTON-FLEMINGTON RD

489 SERGEANTSVILLE ROAD
FLEMINGTON, NJ 08822

(DELAWARE TWP)



6.3
ACRES



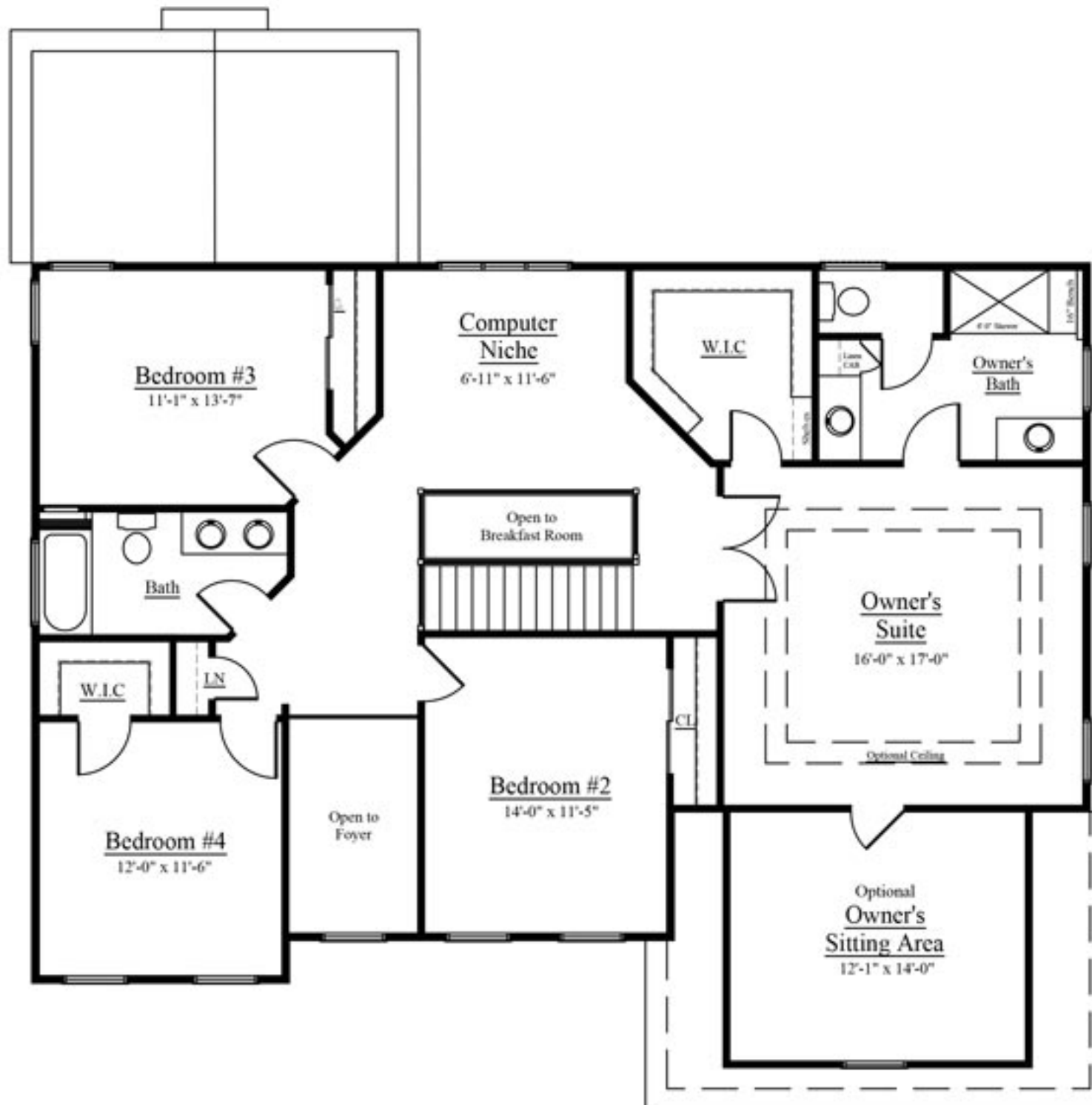
The Jamison Model



First floor plan
Sq. Ft.: 1551
Total Sq.Ft.: 3111

Illustrations and floor plans are artist's conceptual renderings. Details, colors and dimensions are subject to change and field verification. Window and front door locations and room dimensions may vary according to elevation. Mature landscaping not typical. Light fixture locations and window boxes not included.

The Jamison Model



Second floor plan

Sq. Ft.: 1560

Total Sq Ft.: 3111

Illustrations and floor plans are artist's conceptual renderings. Details, colors and dimensions are subject to change and field verification. Window and front door locations and room dimensions may vary according to elevation. Mature landscaping not typical. Light fixture locations and window boxes not included.

9/12/22



Evan Walton
Addison Wolfe Real Estate
Realtor
(215) 862-5500
(215) 327-4709
evan@AddisonWolfe.com

Jamison Standard Luxury Features

2100 Old Bethlehem Pike, Sellersville PA 18960

Community Benefits and Features

- Bucks County
- Pennridge School District
 - Pennridge High School
 - Pennridge South Middle School
 - West Rockhill Elementary School
- 4.24 acres
- Private Water
- Private Sewer

Spectacular Interiors

- Nine-foot ceilings on first floor
- Luxurious master bedroom suite, including spacious walk-in closets, lavish bath, and option sitting room
- Warm and spacious family room with gas fireplace
- Elegant trim package, 2-panel doors throughout, optional crown molding & chair rail in dining room
- Finely crafted wood floors are standard in the foyer, powder room, kitchen & breakfast room (for most floor plans)
- Wall to wall carpeting in an array of colors

Gourmet Kitchens

- Sunny breakfast area overlooking rear yard
- Sprawling kitchen displaying fine attention to detail in every aspect
- Granite counter tops
- Gourmet GE Appliances include energy saver dishwasher, self-cleaning oven and microwave 🌱
- Your choice of beautifully crafted Century cabinetry
- Trashcan / recycling drawer
- Single bowl stainless steel sink

🌱 Denotes Prime's High Efficiency Features

Lavish Bathrooms

- Exquisitely detailed primary bath with double vanity, separate stall shower, and ceramic tile floor
- Ceramic tile floor in hall bath
- Pedestal sink in powder room

Superior Construction & Energy Efficiency

- Poured concrete 8' foundation walls (9' are optional)
- Insulated steel exterior doors with weather stripping and adjustable thresholds
- Full insulation with R-21 walls & R-49 ceilings
- Additional "Green" building features available 🌱

Exteriors Features

- Choose from a wide variety of maintenance-free vinyl siding & shutters
- Seamless aluminum gutters and aluminum downspouts
- Aluminum wrapped soffits and fascia
- Fiberglass architectural style roof shingles with a 30-year warranty
- Two-car side entry garage (additional garage bays are optional)
- High efficiency windows with grilles & screens

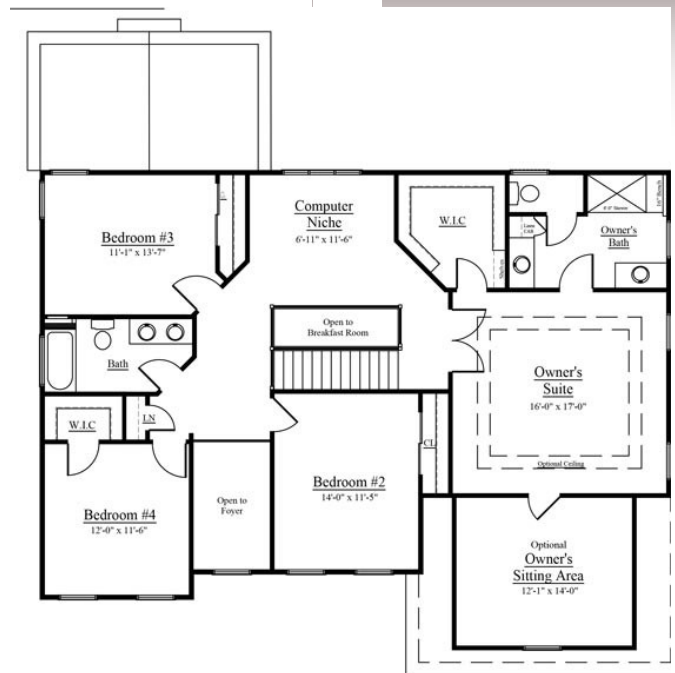
Utilities and Conveniences

- High efficiency air conditioning for maximum comfort
- High efficiency LP gas heater
- 50-gallon, quick-recovery water heater
- Laundry room with washer & dryer hook ups and dryer vent
- Pex plumbing water lines

Jamison Model



- ◆ 4 Bedroom
- ◆ 2.5 Bathrooms
- ◆ 3,111 Sq Ft
- ◆ 2 Car Garage
- ◆ Impressive Owner Suite
- ◆ Turn this home into your dream home!



2100 Old Bethlehem Pike, Sellersville PA 18960

Offered at \$950,000



Evan Walton
Realtor
(215) 862-5500
(215) 327-4709
evan@AddisonWolfe.com

