

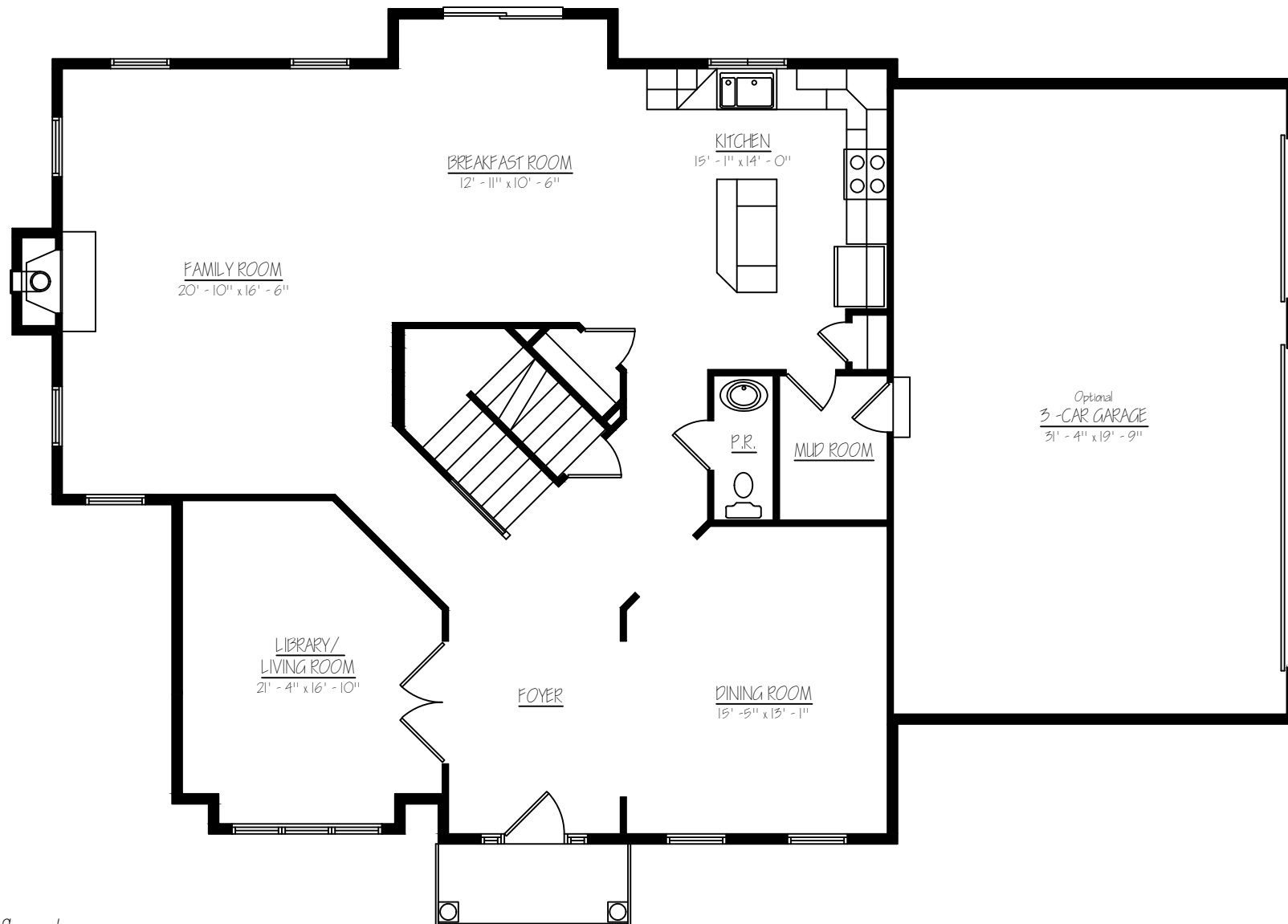
The Yardley



Shown with optional Modern Farmhouse facade, metal roofs, transom above door, and black windows.
Landscape package not included



The Yardley Model

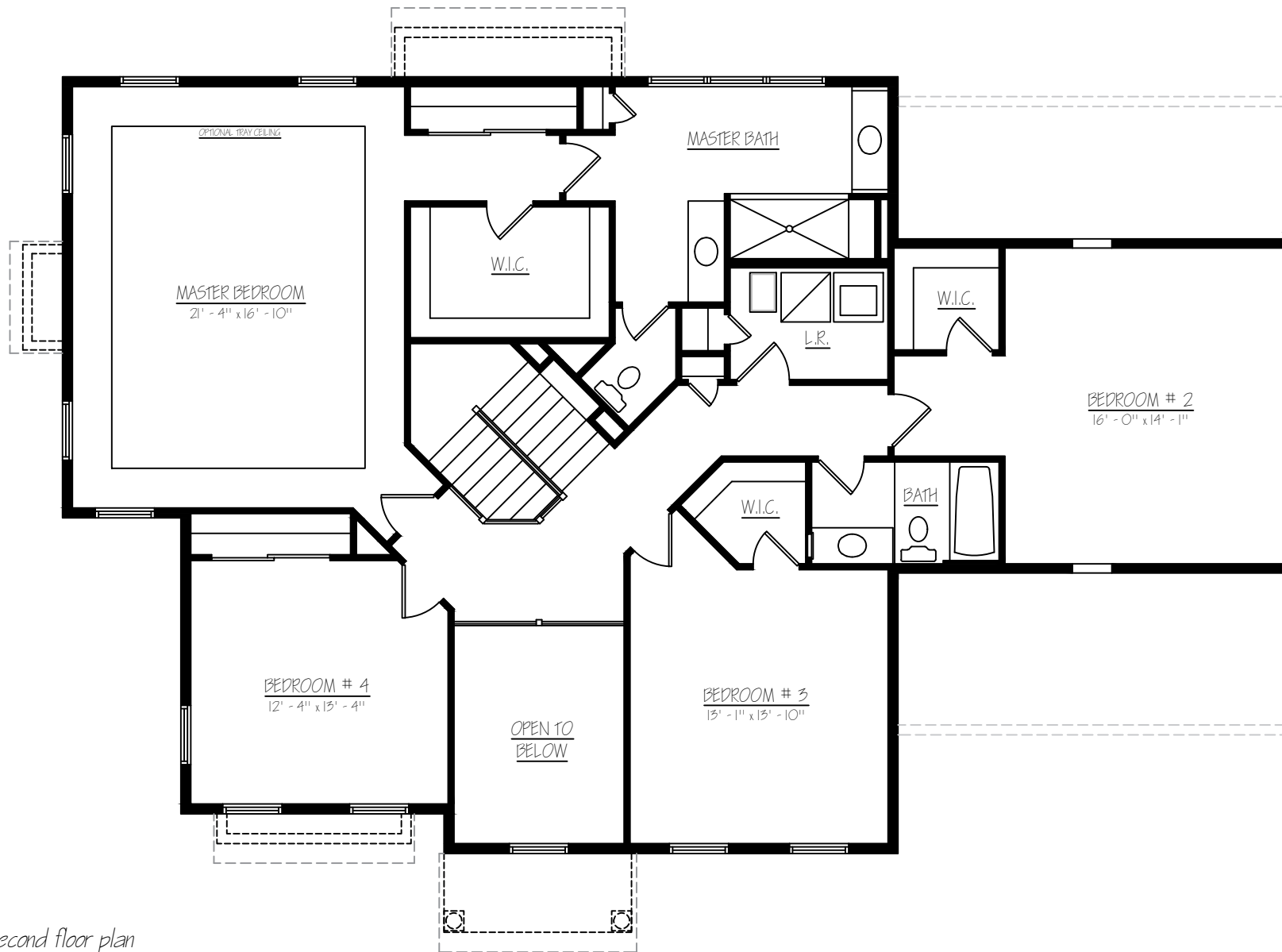


first floor plan
Sq. Ft.: 1579

Illustrations and floor plans are artist's conceptual renderings. Details, colors and dimensions are subject to change and field verification. Window and front door locations and room dimensions may vary according to elevation. Mature landscaping not typical. Light fixture locations and window boxes not included.

2/24/22

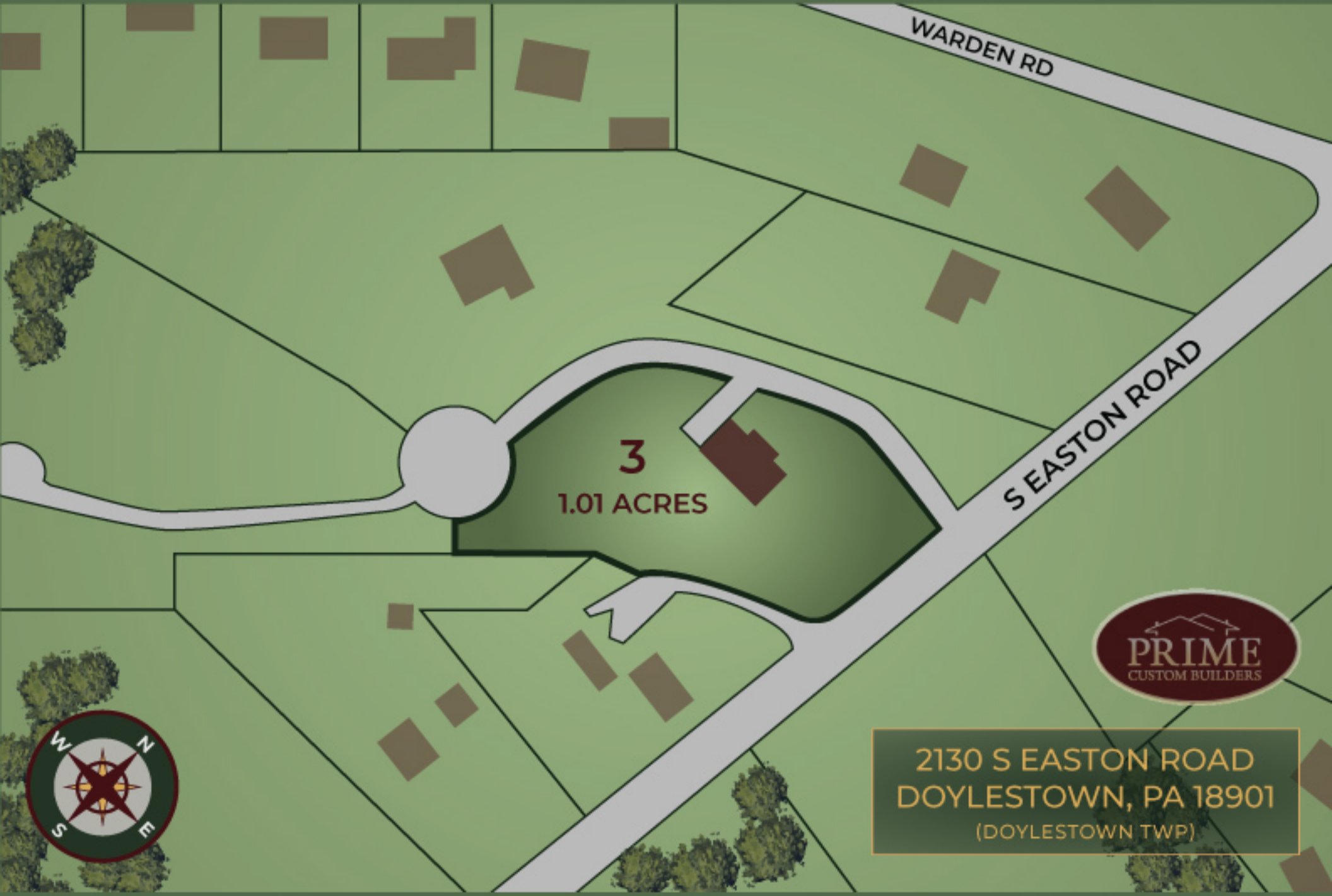
The Yardley Model



second floor plan
Sq. Ft.: 1774

Illustrations and floor plans are artist's conceptual renderings. Details, colors and dimensions are subject to change and field verification. Window and front door locations and room dimensions may vary according to elevation. Mature landscaping not typical. Light fixture locations and window boxes not included.

9/28/21



WARDEN RD

S EASTON ROAD

3
1.01 ACRES



2130 S EASTON ROAD
DOYLESTOWN, PA 18901
(DOYLESTOWN TWP)





For more Information, contact:
Sheri Oshins at Prime Custom Builders
350 S Main Street Suite 307
Doylestown, PA 18901
215.343.3800
sheri@primecustombuilders.com

2130 S. Easton Rd Doylestown, PA 18901, Homesite #3

Standard Luxury Features


Community Benefits and Features

- 1.01-acre lot
- Central Bucks School District
- Doylestown Township
- Private Water
- Private Sewer

Spectacular Interiors

- Nine-foot ceilings on first floor
- Luxurious master bedroom suite, including walk-in closet and lavish bathroom
- Warm and spacious family/great room with gas fireplace
- Elegant trim package includes 2 panel doors throughout, crown molding, shadow boxing & chair rail in dining room
- Dramatic two-story foyer
- Classic staircase with stained oak railing and painted balusters
- Finely crafted hardwood flooring in foyer, kitchen, breakfast room & powder room
- Wall to wall carpeting in an array of colors


Gourmet Kitchens

- Sunny breakfast area overlooking rear yard
- Sprawling kitchen displaying fine attention to detail in every aspect
- Granite countertops
- Pantry
-  Gourmet General Electric appliances including energy saver dishwasher, cooktop, self-cleaning wall oven and built-in microwave
- Your choice of beautifully crafted raised panel cabinetry
- Trash can / recycling drawer
- Stainless steel sink


Lavish Bathrooms

- Exquisitely detailed master bath with two vanities, stall shower, tile floor, and private water closet
- Hall bath with ceramic tile floor
- Pedestal sink in powder room



Superior Construction & Energy Efficiency

- Poured concrete foundation walls
- Insulated steel exterior doors with weather stripping and adjustable thresholds
- Full insulation with R-21 walls & R-49 ceilings
-  Additional "Green" building features available

Exteriors Features

- Your choice of a wide variety of low maintenance vinyl siding & shutters
- Seamless aluminum gutters and aluminum downspouts
- Aluminum wrapped soffits and fascia
- Fiberglass architectural style roof shingles with 30-year warranty
- Three car side entry garage
-  High efficiency windows with grilles & screens

Utilities and Conveniences

-  Dual-zoned, high efficiency air conditioning for maximum comfort and efficiency
-  High efficiency gas heater
- 50-gallon quick recovery gas water heater
- 2nd floor Laundry Room with washer & dryer hook ups and dryer vent
- Pex Plumbing Water Lines

All information is deemed reliable but not guaranteed. Contents subject to errors and omissions.

In a continuing effort to improve our homes, Prime Custom Builders, LLC reserves the right to make changes and/or modifications to plans, elevations, specifications, features, colors and prices without prior notice. Last revision 2.22



For more Information, contact:
Sheri Oshins at Prime Custom Builders
350 S Main Street Suite 307
Doylestown, PA 18901
215.343.3800
sheri@primecustombuilders.com

Homesite #3 price includes the following Special Upgraded Options:

Upgraded Exterior Features

- Stone front

Upgraded Interior Features

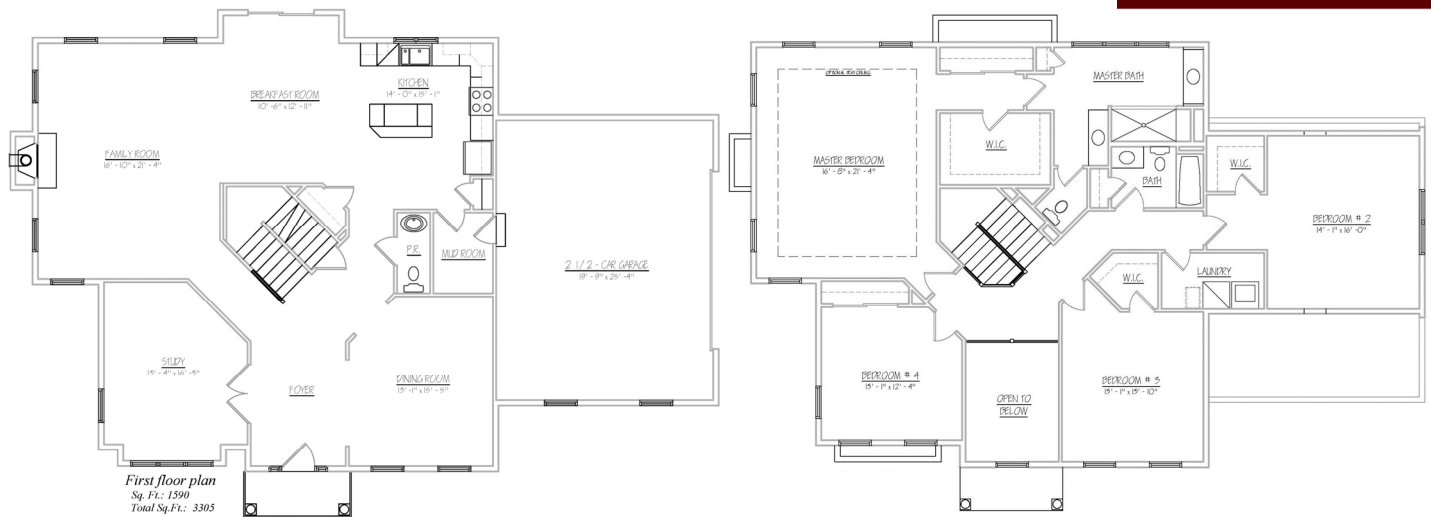
- Hardwood floors throughout first floor
- Oak main stairs
- Tile backsplash in kitchen
- Upgraded appliance package
- Kohler Fixtures
- Tile shower floor in owner's bathroom suite
- Shadowbox molding in dining room
- Two Zones for HVAC
- 15x20 Patio off of breakfast room
- 3- car garage

Yardley Model



Shown with optional modern farmhouse facade, metal roofs, transom above door, black windows
Landscape package not included

- ◆ 4 Bedrooms
- ◆ 2.5 Bathrooms
- ◆ 3,353 Square Feet
- ◆ 2-Car Front Entry Garage (standard)
- ◆ Two-story Foyer
- ◆ Impressive Owner Suite with Optional Sitting Room
- ◆ Turn this home into your dream home!



2130 S Easton Rd, Doylestown (Doylestown Twp), PA 18901

Proudly Offered at \$995,000



Sheri Oshins, Realtor & Sales Specialists
2701 York Rd
Jamison, PA 18929
215-343-8200 (O) | 215-343-3800 (C)
Sheri@PrimeCustomBuilders.com

