

# Williams Model



Shown with optional elevation, metal roofs, aside entry garage nd landscape package  
Shown with Upgraded front door



215-343-3800

33 BARBERTOWN POINT BREEZE RD,  
FRENCHTOWN, NJ 08825  
(KINGSWOOD TWP)



2 ACRES

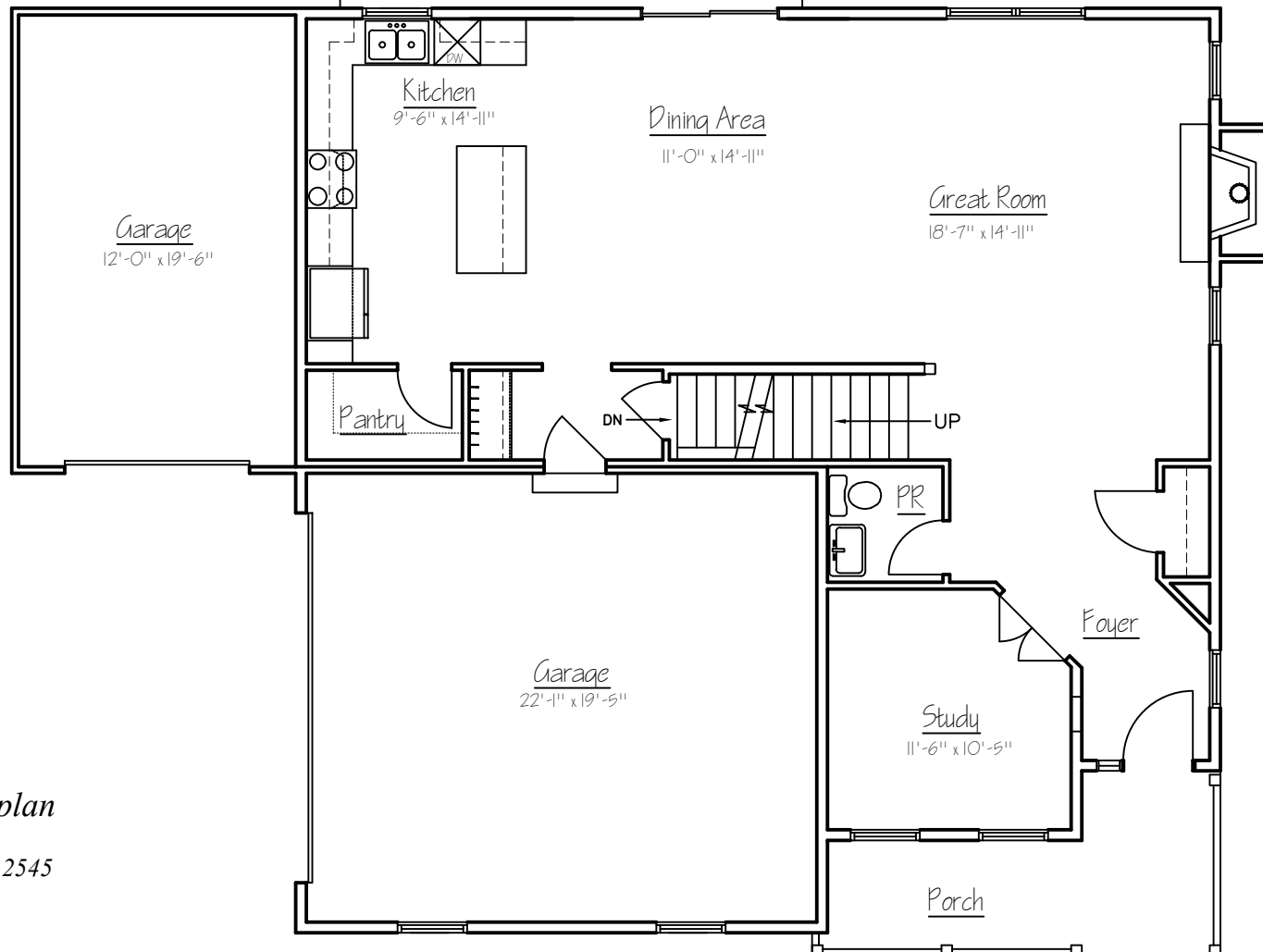
GRAVEL DR

BARBERTOWN POINT BREEZE RD



# The Williams Model

Marketed By:

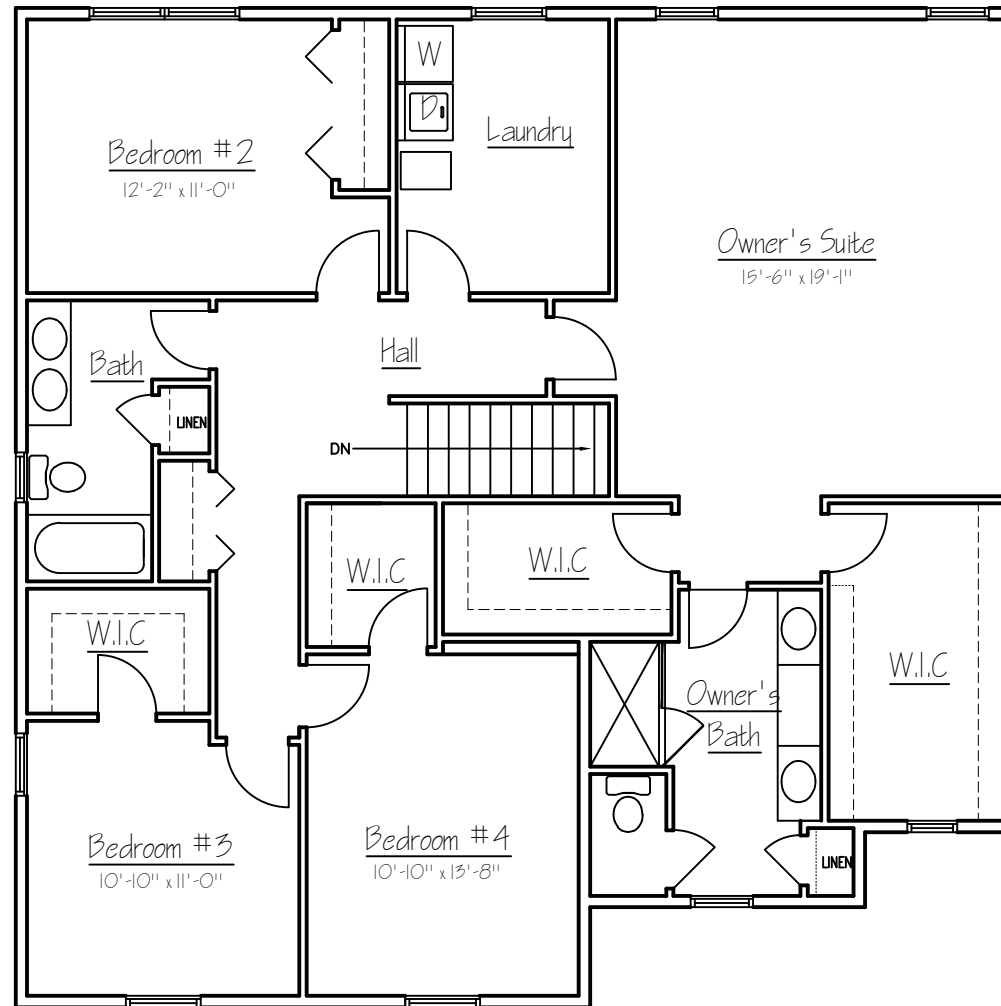


*First floor plan*  
Sq. Ft.: 1078  
Total Sq. Ft.: 2545

Illustrations and floor plans are artist's conceptual renderings. Details, colors and dimensions are subject to change and field verification. Window and front door locations and room dimensions may vary according to elevation. Mature landscaping not typical. Light fixture locations and window boxes not included. 4/11/23

# The Williams Model

Marketed By:



## Second floor plan

Sq. Ft.: 1484

Total Sq. Ft.: 2545

Illustrations and floor plans are artist's conceptual renderings. Details, colors and dimensions are subject to change and field verification. Window and front door locations and room dimensions may vary according to elevation. Mature landscaping not typical. Light fixture locations and window boxes not included. 4/11/23



350 S. Main Street, Suite 307  
Doylestown, PA 18901  
Phone (215) 343-3800

sheri@primecustombuilders.com

---

## Williams Standard Luxury Features

33 Barbertown Point Breeze Rd,  
Frenchtown (Kingwood Twp), NJ 08825

### Community Benefits and Features

- Hunterdon County
- Kingwood Township
- Kingwood Township School District
  - Delaware Valley Regional High School
  - MS: Kingwood Twp School
  - ES: Kingwood Twp School
- Lot 2.06 acres
- Private Water – already installed
- Private Sewer – approved 4-bedroom design

### Spectacular Interiors

- Nine-foot ceilings on first floor
- Luxurious master bedroom suite, including spacious walk-in closets, lavish bath, and optional sitting room
- Warm and spacious family room with gas fireplace
- Elegant trim package, 2-panel doors throughout, optional crown molding & chair rail in dining room
- Finely crafted wood floors are standard in the foyer, powder room, kitchen & breakfast room (for most floor plans)
- Wall to wall carpeting in an array of colors

### Gourmet Kitchens

- Sunny breakfast area overlooking rear yard
- Sprawling kitchen displaying fine attention to detail in every aspect
- Granite counter tops
- Gourmet GE Appliances include energy saver dishwasher, self-cleaning oven and microwave 🌱
- Your choice of beautifully crafted Century cabinetry
- Trashcan / recycling drawer
- Single bowl stainless steel sink

### Lavish Bathrooms

- Exquisitely detailed primary bath with double vanity, separate stall shower, and ceramic tile floor
- Ceramic tile floor in hall bath
- Pedestal sink in powder room

### Superior Construction & Energy Efficiency

- Poured concrete 8' foundation walls (9' are optional)
- Insulated steel exterior doors with weather stripping and adjustable thresholds
- Full insulation with R-21 walls & R-49 ceilings
- Additional “Green” building features available 🌱

### Exteriors Features

- Modern Farmhouse Façade
- Choose from a wide variety of low maintenance vinyl siding & shutters
- Seamless aluminum gutters and aluminum downspouts
- Aluminum wrapped soffits and fascia
- Fiberglass architectural style roof shingles with a 30-year warranty
- Two-car front entry garage (side entry and additional garage bays are optional)
- High efficiency windows with grilles & screens

### Utilities and Conveniences

- High efficiency air conditioning for maximum comfort
- High efficiency LP gas heater
- 50-gallon, quick-recovery water heater
- Laundry room with washer & dryer hook ups and dryer vent
- Pex plumbing water lines

🌱 Denotes Prime’s High Efficiency Features

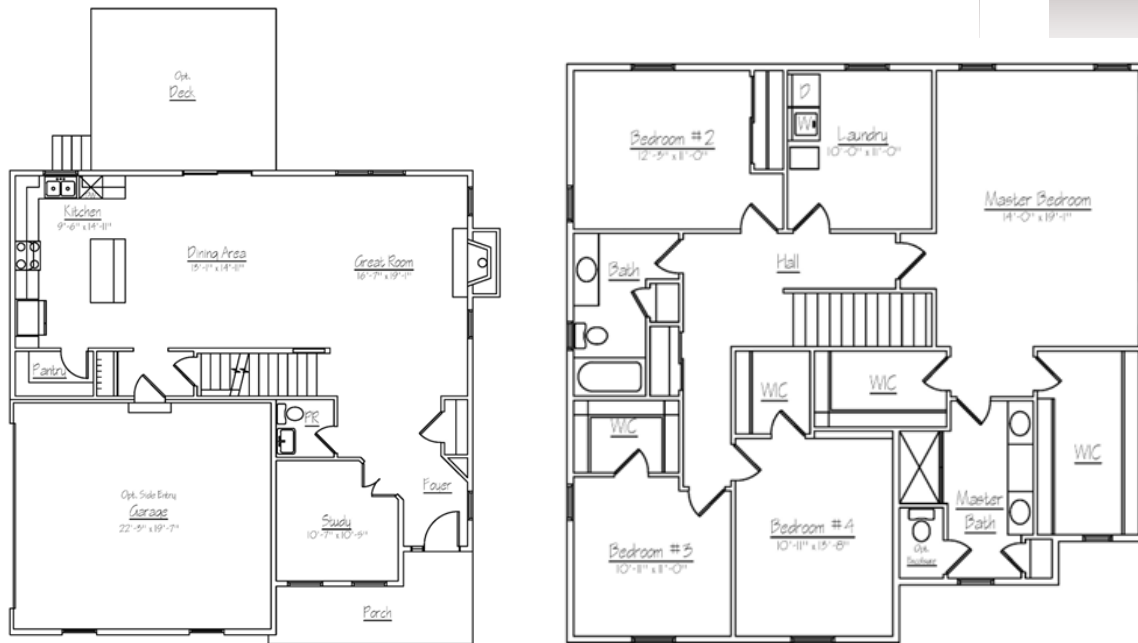
All information is deemed reliable but not guaranteed. Contents subject to errors and omissions. In a continuing effort to improve our homes, Prime Custom Builders reserves the right to make changes and/or modifications to plans, elevations, specifications, features, colors, and prices without prior notice. Last revision 8/23

# Williams Model



Shown with optional elevation, metal roofs, side entry garage, upgraded front door. Landscape package not included

- ◆ 4 bedroom
- ◆ 2.5 Bathrooms
- ◆ 2,545 Sq Ft
- ◆ 2 Car Garage
- ◆ Impressive Owner Suite
- ◆ Turn this home into your dream home!
- ◆ Shown w/ optional side entry garage



33 Barbartown Point Breeze Rd, Frenchtown (Kingswood Twp) NJ 08825

Offered at \$800,000

Marketed By:



Sheri Oshins, Realtor & Sales Specialists  
 350 S Main Street, Suite 307  
 Doylestown, PA 18901  
 Sheri@PrimeCustomBuilders.com | 215-343-3800

